

The Invitational Mills Trophy Race

June 10-11, 2016

Organized under the Authority of
The Mills Trophy Race Committee, Toledo Yacht Club, and Storm Trysail Club
Toledo, Ohio, USA

NOTICE OF RACE

RULES

- 1.1 The regatta will be governed by the rules as defined in *The Racing Rules of Sailing 2013-2016*. **NOTE:** US Sailing's US Safety Equipment Requirements (**USSER Effective Date 1/1/2016, Rev 2016.0**) governing minimum equipment and accommodations for US Coastal events (amended for this event as "Mills Trophy Race Safety Equipment Requirements") will apply.
- 1.2 Under RRS rule 87, PHRF Class Rules, is changed as follows: For the Double Handed Class (only) the minimum crew requirement is eliminated.

2 ADVERTISING

Boats may be required to display advertising chosen and supplied by the organizing authority.

3 ELIGIBILITY AND ENTRY

- 3.1 The regatta is open to boats of the Multi-Hull, PHRF, JAM, Double-Handed and Classics classes.

The Mills Trophy Race is by invitation to boats owned by or under charter to members of yacht clubs or yachting associations affiliated directly or through regional associations with US Sailing. The provision for US Sailing affiliation will be waived for yachts of foreign registry.

Competing vessels must be a minimum of 22 feet LOA. All single-hulled vessels shall be self-righting, enclosed cabin sailing vessels with water tight self-bailing cockpit or positive flotation conforming with US Sailing's US Safety Equipment Requirements (**USSER Effective Date 1/1/2016, Rev 2016.0** as amended for the Mills Trophy Race) governing minimum safety equipment, accommodations, and life lines.

- 3.2 Eligible boats may enter by completing the online entry form together with the required fee, at [Yacht Scoring](#) by Sunday June 5, 2016.
- 3.3 Late entries may be accepted under the following conditions:
 - 1) Special circumstances approved by the Race Committee and with a \$35.00 surcharge.

3.4 All Entries must be made on-line using the Official Entry Forms and be accompanied by a valid Rating Certificate, Proof of Insurance, and credit-card paid entry fee.

3.4 All entries must be received by Wednesday June 8, 2016.

Note: Reflective boat ID #'s will be required to be attached tightly at four corners and displayed aft of the beam on the portside/shoreside lifelines at the finish line (day or night). Please leave mainsail and boat ID# showing well past the finish line.

4 FEES

4.1 Required fees are as follows: \$185.00

Note: First time reflective Boat ID Sail Numbers are available for an additional \$25.00, replacements \$50.00. Contact [the Mills Race Committee](#) to confirm Boat ID order.

4.2 Other fees:

Put-in-Bay hospitality tent wristbands are \$15.00 each and \$10.00 for under age 21 bands.

FYI - Toledo Yacht Club Thursday Night Mills Party entry fee is \$5.00/person.

5 SCHEDULE

5.1 Registration:

Thursday June 9 at Toledo Yacht Club from 1600 to 2100, and
Friday June 10 from 1000 to 1300

5.2 Date of racing: Friday June 10, 2016

5.3 Number of races: One

5.4 The scheduled time of the warning signal for the first race is 1650.

6 MEASUREMENTS

Each boat shall produce a valid PHRF rating certificate. Should there be discrepancies between various handicapping regions, Mills Trophy Race handicapping representatives shall determine an agreed-upon rating for the Mills Trophy Race.

7 SAILING INSTRUCTIONS

The Official Sailing Instructions will be available on-line no later than midnight on May 29, 2016 at [2015 Mills Trophy Race Documents](#) and during registration beginning on Thursday June 9.

Note: The General Sailing Conditions published in the Race Program are intended for overall guidance and in case of discrepancies *are not* the official Sailing Instructions.

8 VENUE

- 8.1 Attachment “A” shows the location of the Toledo Yacht Club harbor.
Attachment “B” shows the location of the Put-in-Bay harbor

8.2 Boat Dockage

Dockage and rafting is available at TYC from Sunday, June 5, at no charge for registrants indicating their date of arrival on the entry form. The entry fee includes directed dockage at Put-in-Bay following the race.

- 8.3 Attachment “C” shows the location of the racing areas.

9 THE COURSES

The courses to be sailed will be as follows:

Three courses, all starting in the vicinity of Toledo Harbor Light and ending at Put-in-Bay, Ohio, to be sailed as described in the Sailing Instructions:

Mills Trophy Course: 69.2nm for Multi-hulls, PHRF 162 and below, and higher rated boats competing for the Mills Trophy.

Governor’s Cup Course: 52.6 nm optional course for PHRF 162 and below.

President’s Trophy Course: 37.7 nm for all JAM classes, Double-handed, PHRF 165 and above. Cruising and Classics classes with 6 or more entries.

10 PENALTY SYSTEM

- 10.1 The Scoring Penalty, rule 44.3, will apply. If circumstances dictate a penalty less severe than DSQ, the penalty will be a minimum of three places (or more) at the discretion of the Protest Committee.
- 10.2 For the Multi Hull Class Only, rule 44.1 is changed so that the Two-Turns Penalty is replaced by the One-Turn Penalty.

11 SCORING

The scoring system is as follows: Time allowances for yachts will be calculated in accordance with a yacht’s rating as approved by the Race Committee.

In addition to PHRF scoring, six or more boats with ORR certificates will also be scored for ORR standings. This only applies to boats on the Mills Trophy Course.

12 BERTHING

Boats shall be kept in their assigned places in the Toledo Yacht Club Basin and the Put-in-Bay Harbor. After finishing, each boat shall contact the Race Committee on VHF 71 and receive confirmation of finish. Boats will then be instructed to monitor VHF 78 for harbor entry and docking instructions. **All boats must wait for the Mills Harbormaster docking instructions.**

13 HAUL-OUT RESTRICTIONS

Keelboats shall not be hauled out during the regatta except with and according to the terms of prior written permission of the race committee.

14 DIVING EQUIPMENT AND PLASTIC POOLS

Underwater breathing apparatus and plastic pools or their equivalent shall not be used around keelboats between the preparatory signal of the first race and the end of the regatta.

15 RADIO COMMUNICATION

Except in an emergency, a boat shall neither make radio transmissions while racing nor receive radio communications not available to all boats. This restriction also applies to mobile telephones. Yachts shall monitor VHF channel 71.

16 PRIZES

Prizes will be given as follows: Race flags will be awarded for first, second, and third place in each class, except as noted below, along with overall and pre-registered one design classes with six or more entries.

Exceptions: First to Finish flag for Mills, President's, or Governor's Trophy competitors only.

Race trophies for each class winner, and all other overall, area and special perpetual trophies will be awarded at the banquet immediately preceding next year's event.

17 DISCLAIMER OF LIABILITY

Competitors participate in the regatta entirely at their own risk. See rule 4, Decision to Race. The organizing authority will not accept any liability for material damage or personal injury or death sustained in conjunction with or prior to, during, or after the regatta.

18 INSURANCE

Each participating boat shall be insured with valid, third-party insurance sufficient to cover liability for loss, damage, personal injury, or death.

19 FURTHER INFORMATION

For further information please contact: mills@toledoyachtclub.com

General Chairman - Ron Soka

419-726-3485 ext 201 or

www.millstrophyrace.com

Mailing Address:

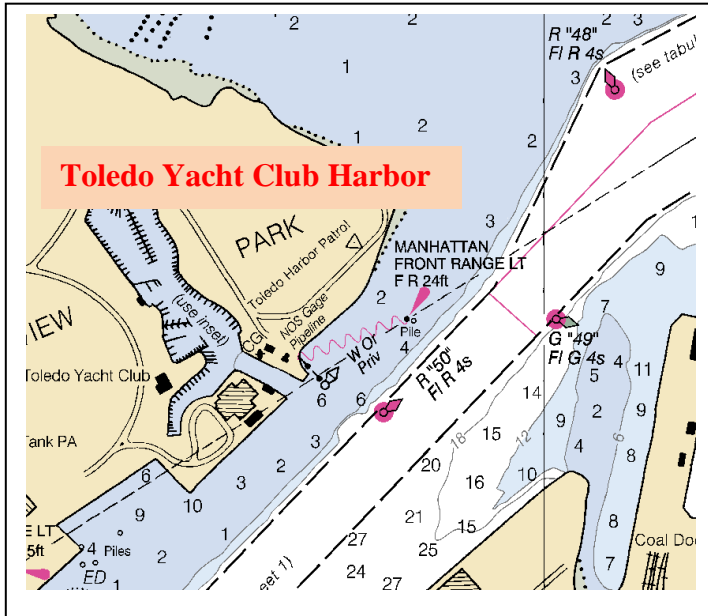
Mills Trophy Race Committee

Toledo Yacht Club

3900 N. Summit Street

Toledo, OH 43611

NOR Attachments A,B,C



Preliminary Starting Times

(See Official Bulletin Board at TYC)

Mills Trophy Course	70.00 nm
1	Preparatory gun 1650 Yellow shape PRRF C & D Starting gun 1700 Red shape
2	Preparatory gun 1705 Blue shape PRRF B Starting gun 1710 Red shape
3	Preparatory gun 1715 Blue shape PRRF A & ICA Starting gun 1720 Red shape
4	Preparatory gun 1725 Blue shape MIDD HULL Starting gun 1730 Red shape
Governor's Cup Course	54.10 nm
5	Preparatory gun 1735 Blue shape PRRF G & H Starting gun 1740 Red shape
6	Preparatory gun 1745 Blue shape PRRF E & F Starting gun 1750 Red shape
President's Trophy Course	38.06 nm
7	Preparatory gun 1755 Blue shape DOUBLE HANDED Starting gun 1800 Red shape O'Brien's 162
8	Preparatory gun 1805 Blue shape PRRF J & K Starting gun 1810 Red shape
9	Preparatory gun 1815 Blue shape PRRF L & M Starting gun 1820 Red shape GREENGLASS
10	Preparatory gun 1825 Blue shape JOB & MAIN E Starting gun 1830 Red shape
11	Preparatory gun 1835 Blue shape JOB & MAIN D Starting gun 1840 Red shape
12	Preparatory gun 1845 Blue shape JOB & MAIN C Starting gun 1850 Red shape

One Design Trophy Course 30.50 nm

15	Preparatory gun 1915 Blue shape ONE DESIGN Starting gun 1920 Red shape PRRF 161+
16	Preparatory gun 1925 Blue shape CLASSIC Starting gun 1930 Red shape

Note:
 (a) Any additional class starts will be noted on the bulletin board. The Race Committee may grant a separate start if selected by a class having sufficient interest.
 (b) A number designating the start of each class will be displayed from the Race Committee boat during the period prior to the start of that class. Class assignment included in the Skipper's Packet.

Finish Line Diagram

Put-in-Bay Harbor

Mills Race Courses

